



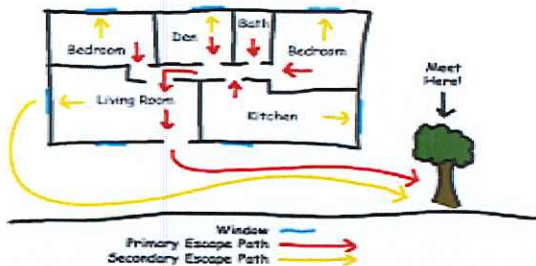
Fire Escape Map

In the case of a fire in your home everyone needs to have a Fire Escape Map/Plan. Use the information and area below to create a plan.

Create a map of your house in the box below to show how you would exit in case of an emergency or fire.

- 1) Draw a line from your bedroom to at least two exits from your home. EXAMPLE: the front door, side door or window.
- 2) Designate a Safe Meeting Place outside the home. EXAMPLE: Tree, Rock, or Swing set. (Never the mailbox for safety)
- 3) Draw the locations of all smoke alarms and fire extinguishers in your home so everyone is aware of these locations.
- 4) Have your parents help you plan and practice the safety route together

EXAMPLE



TIPS:

1. Safely Exit the home as soon as possible.
2. If the room fills with smoke stay low to the ground.
3. Always check the door for heat with the back of your hand before opening it to exit the room.
4. Always dial 911 for help during a Emergency.
5. Test your smoke alarms at least once a month.

Create a Fire Escape Map

For your home.